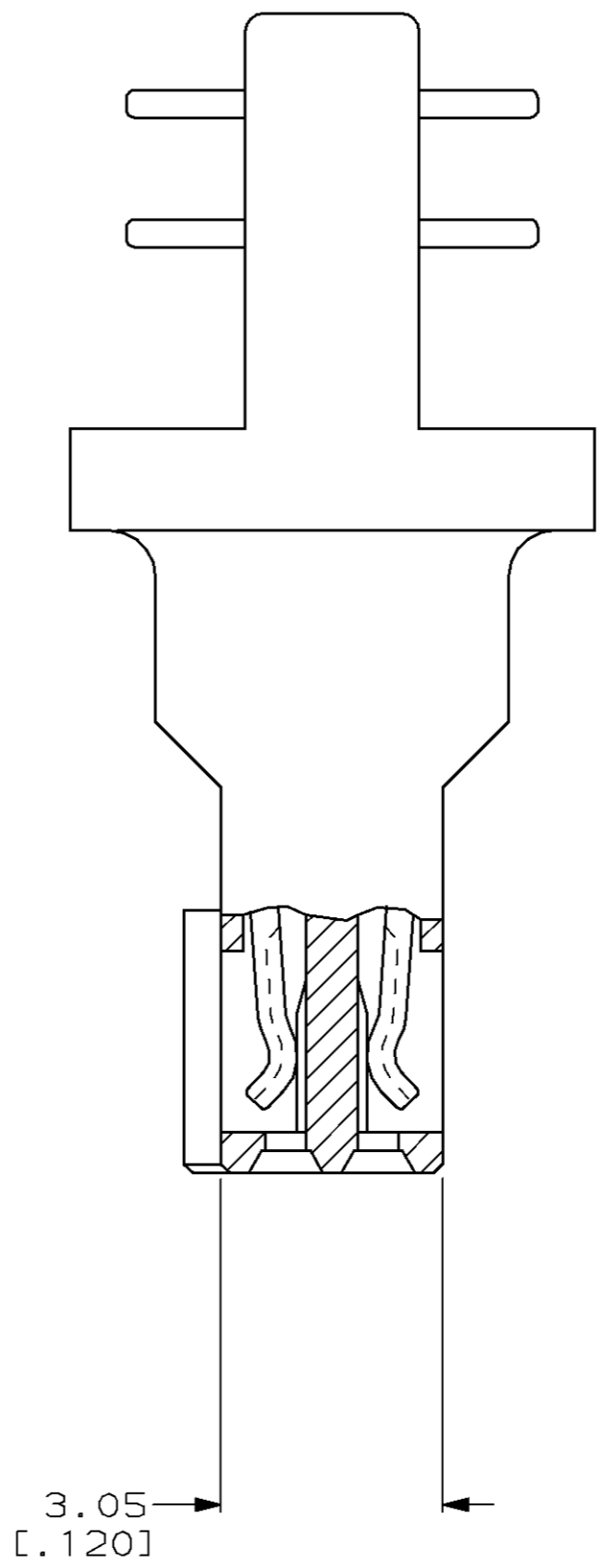
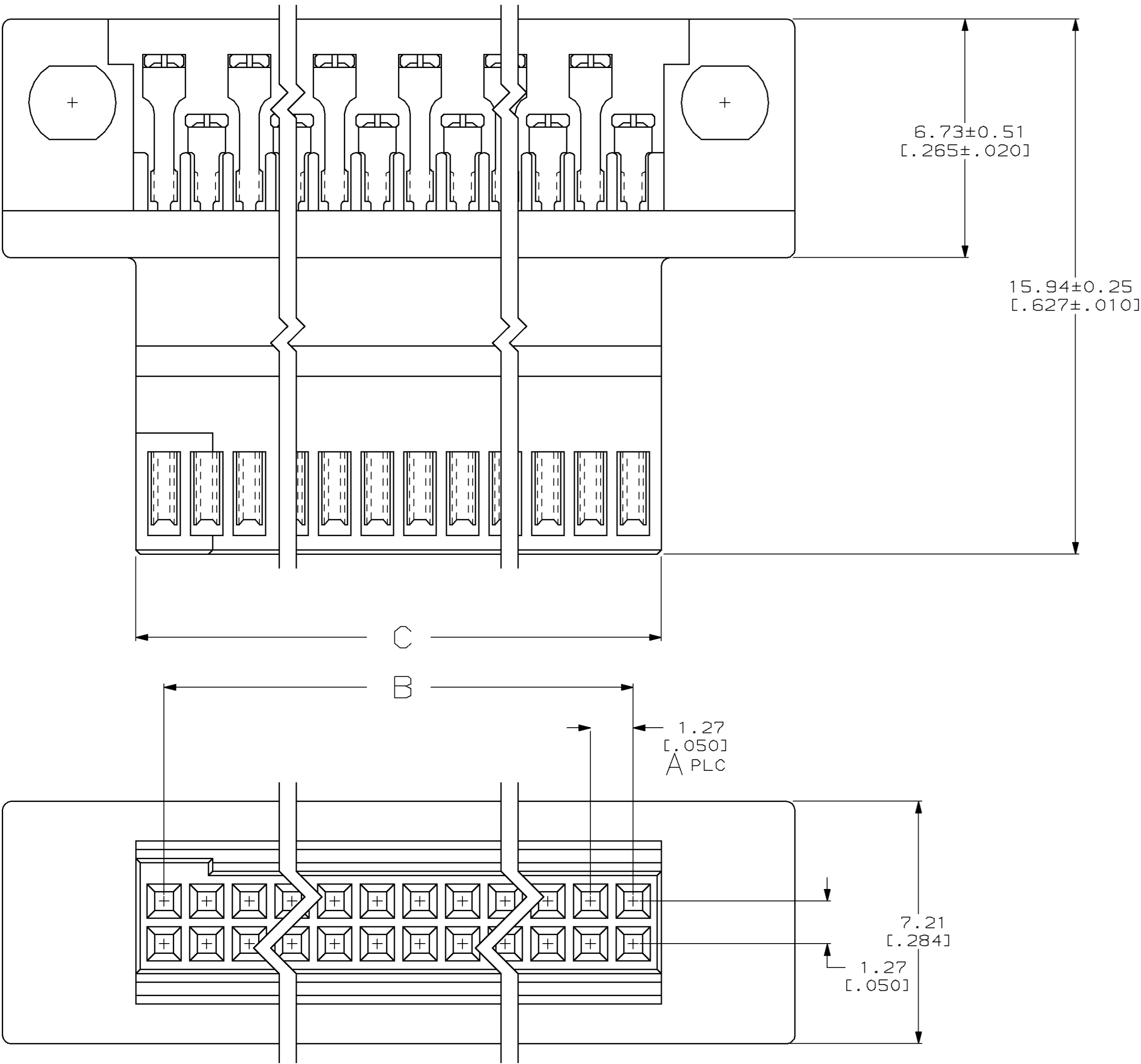
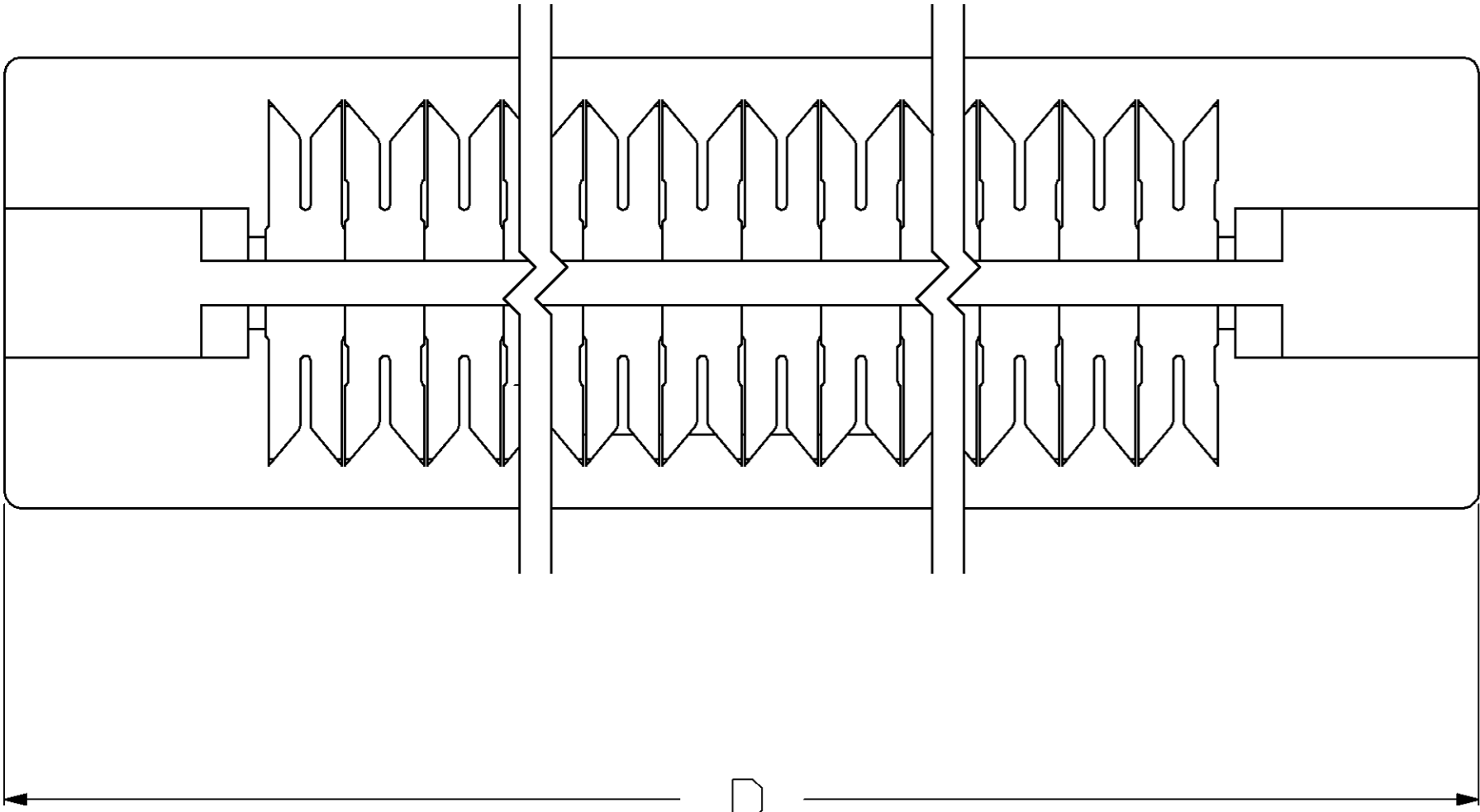


LOC	DIST			REVISIONS				
AD	39	P	#	ZONE	LTR	DESCRIPTION	DATE	APPD
					O	RELEASED	--	--
				A	REV PER	0010-1256-93	8-24-93	PS
				B	REV PER	0010-1227-93	2-8-94	PS
				C	REV PER	0010-1445-93	2-8-94	PS
				D	REV PER	0010-1656-93	2-8-94	PS
				E	REV PER	0010-0141-94	2-8-94	PS
				F	REV PER	0310-0051-96	8-27-96	PS



- 1 MATERIAL:  
RECEPTACLE CONTACTS- PHOSPHOR BRONZE  
RECEPTACLE HOUSING: LCP; BLACK  
TERMINATING COVERS: POLYESTER; BLACK
- 2 PLATING:  
RECEPTACLE CONTACTS- 0.00076 [.000030] MINIMUM GOLD PLATE IN CONTACT AREA,  
0.00127 [.000050] MINIMUM BRIGHT TIN-LEAD PLATE IN TERMINATION AREA,  
ALL OVER 0.00127 [.000050] MINIMUM NICKEL.
3. RECOMMENDED WIRE:  
28 AWG- 0.91 [.036] MAX O.D. PVC OR POLYETHYLENE INSULATION.
4. SHORT-LONG CONTACT SEQUENCT MUST ALTERNATE BUT MAY BEGIN WITH EITHER  
A SHORT OR LONG CONTACT.
- 5 OBSOLETE PART NUMBER.

76.96 [3.030]	43.59 [1.716]	41.91 [1.650]	33	68	1 104893 1
			49	100	1-104893-0
71.83 [2.828]	63.91 [2.516]	62.23 [2.450]	44	90	104893-9
65.48 [2.578]	57.56 [2.266]	55.58 [2.200]	39	80	104893-8
59.13 [2.328]	51.21 [2.016]	49.53 [1.950]	34	70	104893-7
52.78 [2.078]	44.86 [1.766]	43.18 [1.700]	29	60	104893-6
46.43 [1.828]	38.51 [1.516]	36.83 [1.450]	24	50	104893-5
40.08 [1.578]	32.16 [1.266]	30.48 [1.200]	19	40	104893-4
33.73 [1.328]	25.81 [1.016]	24.13 [.950]	14	30	104893-3
27.38 [1.078]	19.46 [.766]	17.78 [.700]	9	20	104893-2
21.03 [.828]	13.11 [.516]	11.43 [.450]	4	10	104893-1
14.68 [.578]	6.76 [.266]	5.08 [.200]	D	C	B
			A	NO OF POSN	PART NO

DO NOT SCALE PRINT. UNLESS SPECIFIED DIMENSIONS IN mm [INCHES] TOLERANCES: ON ; 2 PLC DEC ± 0.36 [.015] 3 PLC DEC ± - ANGLES ± -	DR 6-17-93 J.HERRINGTON	<b>AMP</b> AMP Incorporated Harrisburg, PA 17105-3608		
	CHK 6-24-93 P.SREMCICH			
	APPD 6-24-93 P.SREMCICH	NAME		
	APPD 6-24-93 O.DUPLER	AMPMODU 50/50 GRID CABLE CONN. ASSY		
FINISH	PRODUCT SPEC 108-1443	SIZE	CAGE CODE	DRAWING NO
	APPLICATION SPEC 114-7010	D	00779	C=104893
	WEIGHT -	SCALE 10:1	SHEET 1 OF 1	

THIS DRAWING IS A CONTROLLED DOCUMENT FOR  
AMP INCORPORATED. IT IS SUBJECT TO CHANGE  
AND THE CONTROLLING ENGINEERING ORGANIZATION  
SHOULD BE CONTACTED FOR THE LATEST REVISION.